

# ALARM VALVE MODEL SSBJ

(Groove\*Groove/Flange\*Flange/Flange\*Groove)



## TECHNICAL DATA

CERTIFICATE	<b>UL Listed</b> <b>FM Approved</b>
CONNECTION	Flange ANSI B16.1 Class 125/150, BS EN1092-2 PN16, grooved AWWA C606/ISO 6182-12
FUNCTION	Alarm check valve.
W. PRESSURE	200 / 300 psi (13.8 / 20.7 bar)
AVAILABLE SIZE	2" – 12"
SURFACE FINISH	Red to RAL 3001
FACTORY HYDROSTATIC TEST PRESSURE	35 kg/sq.cm 500 psi
MINIMUM OPERATING PRESSURE	1.4 kg/sq.cm
TEMPERATURE RATING	4°C to 70°C
NET WEIGHT	Refer Table



## DESCRIPTION

JYCO Alarm Valve is a double seated clapper check valve with grooved seat design, which ensures positive water flow for alarm operation and is designed for installation in wet pipe sprinkler system. External bypass prevents false alarm under all supply pressure condition. In the event of variable pressure condition, false alarm is prevented with the provision of retard chamber, thus the design allows for installation under both variable and constant supply pressure condition. Operation of one or more automatic fire sprinklers causes the water to flow into the sprinkler system causing the alarm valve to open, allowing continuous flow of water into the system and transmittal of alarms, both electrical and mechanical.

## MAIN PARTS AND MATERIAL

<b>Body / cover</b>	Ductile iron as ASTM A536, 65-45-12	<b>Diaphragm</b>	BNR rubber as ASTM D2000
<b>Standard Accessories</b>	Complete pipelines for valve	<b>Pre-assembly components</b>	Water motor gong, alarm pressure switch, pressure gauge

## Flange/Groove/Flange\*Groove/Groove\*Flange

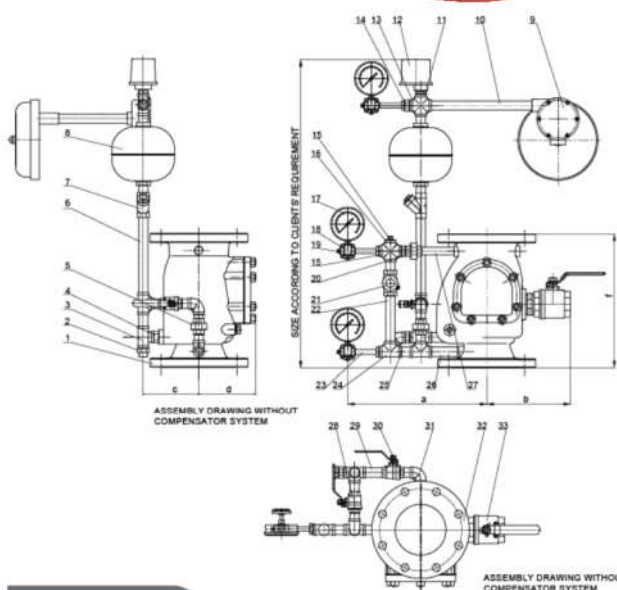
### Technical Features

- Maximum Adjust Pressure: 200PSI-300PSI/PN10/PN16
- Flange Standard: ASME/ANSI B16.1 Class 125 or ASME/ANSI B16.42 CLASS 150 or BS EN1092-2 PN16 or GB/T9113.1
- Groove Standard: AWWA C606/ISO 6182-12
- Working Temperature: 4°C-70°C
- Installation Height of the Gong According to Clients' requirements
- Gong can be Installed indoor or outdoor through wall as to clients' requirements
- External Dimensions for reference only
- Coating details: Epoxy coated interior and exterior by Electrostatic Spray or Coating upon request
- Alarm check valves use in wet pipe of sprinkler system, Fire protection system



### Valve Material List

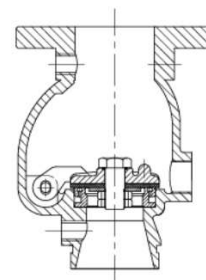
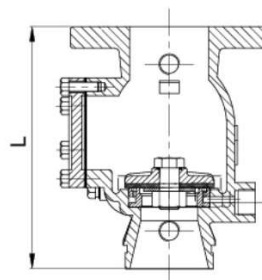
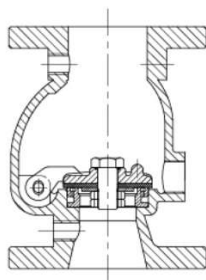
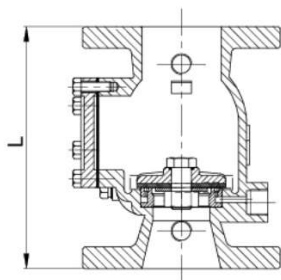
Size	Name	Material	QTY
1	Alarm Valve		1
2	Orifice,retard	C954/SS304	1
3	Tee	Steel/SS304	2
4	Nipple	Steel/SS304	6
5	Union	Steel/SS304	1
6	Nipple	Steel/SS304	1
7	Y Strainer	C954/SS304	1
8	Retard Chamber	Steel	1
9	Gong Assembly	Component	1
10	Nipple	Steel/SS304	1
11	Reducer Bushing	Steel/SS304	1
12	Pressure Switch	Component	1
13	Cross	Steel/SS304	1
14	Reducer Bushing	Steel/SS304	1
15	Plug	Steel/C954/SS304	1
16	Cross	Steel/SS304	2
17	Pressure Gauge	Component	3
18	3-way Valve Gauge	C954/SS304	3
19	Plug	Steel/C954/SS304	3
20	Orifice,retard	C954/SS304	1
21	Check Valve	C954/SS304	1
22	Nipple	Steel/SS304	1
23	Nipple	Steel/SS304	3
24	Tee	Steel/SS304	2
25	Nipple	Steel/SS304	4
26	Nipple	Steel/SS304	1
27	Nipple	Steel/SS304	1
28	Ball Valve	C954/SS304	1
29	Nipple	Steel/SS304	1
30	Ball Valve	C954/SS304	1
31	Elbow	Steel/SS304	2
32	Nipple	Steel/SS304	1
33	Ball Valve	C954/SS304	1



### Dimensions

Size	a	b	c	d
2"	340	205	145	110
2.5"	340	205	145	110
3"	340	205	145	110
4"	342	250	160	136
5"	349	274	180	162
6"	349	274	180	162
8"	415	290	205	195
10"	475	340	240	235
12"	495	368	270	270

## General Technical Information



### Flange\*Flange



### Dimension Chart

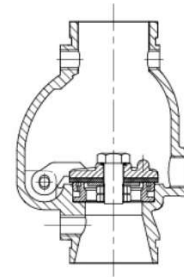
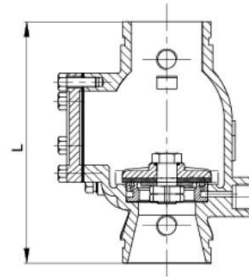
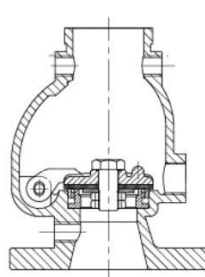
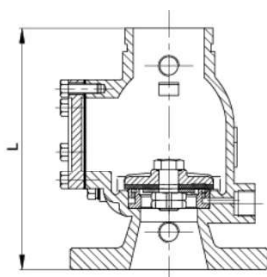
Size	L(mm)	L(inch)
DN50(2in)	233	9.17
DN65(2.5in)	236	9.29
DN80(3in)	245	9.65
DN100(4in)	316	12.44
DN125(5in)	386	15.20
DN150(6in)	390	15.35
DN200(8in)	438	17.24
DN250(10in)	535	21.06
DN300(12in)	622	24.49

### Flange\*Groove



### Dimension Chart

Size	L(mm)	L(inch)
DN50(2in)	239	9.41
DN65(2.5in)	240	9.45
DN80(3in)	245	9.65
DN100(4in)	316	12.44
DN125(5in)	386	15.20
DN150(6in)	390	15.35
DN200(8in)	438	17.24
DN250(10in)	535	21.06
DN300(12in)	622	24.49



### Groove\*Flange



### Dimension Chart

Size	L(mm)	L(inch)
DN50(2in)	239	9.41
DN65(2.5in)	240	9.45
DN80(3in)	245	9.65
DN100(4in)	316	12.44
DN125(5in)	386	15.20
DN150(6in)	390	15.35
DN200(8in)	438	17.24
DN250(10in)	535	21.06
DN300(12in)	622	24.49

### Groove\*Groove



### Dimension Chart

Size	L(mm)	L(inch)
DN50(2in)	245	9.65
DN65(2.5in)	245	9.65
DN80(3in)	245	9.65
DN100(4in)	316	12.44
DN125(5in)	386	15.20
DN150(6in)	390	15.35
DN200(8in)	438	17.24
DN250(10in)	535	21.06
DN300(12in)	622	24.49

#### LIMITED WARRANTY

JYCO FIRE CORP. hereby referred to as JYCO FIRE warrants to the original purchaser of the fire protection products manufactured by JYCO FIRE and to any other person to whom such equipment is transferred, that such products will be free from defect in material and workmanship under normal use and care, for two (2) years from the date of shipment by JYCO FIRE. Products or Components supplied or used by JYCO FIRE, but manufactured by others, are warranted only to the extent of the manufacturer's warranty. No warranty is given for product or components which have been subject to misuse, improper installation, corrosion, unauthorized repair, alteration or un-maintained. JYCO FIRE shall not be responsible for system design errors or improper installation or inaccurate or incomplete information supplied by buyer or buyer's representatives. JYCO FIRE will repair or replace defective material free of charge, which is returned to our factory, transportation charge prepaid, provided after our inspection the material is found to have been defective at the time of initial shipment from our works. JYCO FIRE shall not be liable for any incidental or consequential loss, damage or expense arising directly or indirectly from the use of the product including damages for injury to person, damages to property and penalties resulting from any products and components manufactured by JYCO FIRE. JYCO FIRE shall not be liable for any damages or labour charges or expense in making repair or adjustment to the product. JYCO FIRE shall not be liable for any damages or charges sustained in the adaptation or use of its engineering data & services. In no event shall JYCO FIRE's product liability exceed an amount equal to the sale price. The foregoing warranty is exclusive and in lieu of all other warranties and representation whether expressed, implied, oral or written, including but not limited to, any implied warranties or merchantability or fitness for a particular purpose. All such other warranties and representations are hereby cancelled.

#### NOTICE :

The equipment presented in this bulletin is to be installed in accordance with the latest publication standards of NFPA or other similar organisations and also with the provision of government codes or ordinances wherever applicable.

The information provided by us is to the best of our knowledge and belief, and consist of general guidelines only. Site handling and installation control is not in our scope. Hence we give no guarantee for result and take no liability for damages, loss or penalties whatsoever, resulting from our suggestion, information, recommendation or damages due to our product. Product development is a continuous programme of JYCO FIRE CORP. and hence the right to modify any specification without prior notice is reserved with the company.



**JYCO FIRE CORP.**  
Comprehensive protection

Ximei Town, Nan'an City, Fujian province, China.

• TEL: +86 15905012778

• WEB: <https://jycofire.com>

• EMAIL: [jycofire@gmail.com](mailto:jycofire@gmail.com)